



Sound - Light - Video

For your new Skating Center



February 2016



A little about us

Audio Lite was started in 1971 by a rink owner who wasn't satisfied with the lighting products available and started building his own. Today, more than 45 years later, that same rink owner, Terry Maxfield, is still at the helm and building sound, light and video systems for skating centers all over the United States.

Our products are tested in his skating center before they are ever offered for sale to other rinks. With our intimate knowledge of the roller skating business AND sound, light and video business, we are in a unique position to offer you products that are perfectly suited to your needs.

If you would like to see and hear our work, just give us a call. We probably have a completed project near you! The photo above is our skating center located in Kansas.

Proud members of...



Since 1971



**Roller Skating Suppliers and
Manufacturers**



DJ Booth Suggestions

Since every rink has a different sized space to work in, each booth gets designed differently. It is always best if the DJ is facing the skating floor when he is speaking into the microphone, which is mounted beside the mixer. Here are some general considerations:

Your DJ will probably work standing up and may have skates on. Make the counter height suitable.

Your mixer and CD remote will mount in the counter top. Plan for slant sides and the opening elevated about 2"-3" in the back. Refer to image above. The face plate sizes can vary in height but are usually 10.5" tall and always 19" wide. Do not make the cut-out until the equipment is on site.

The rest of the equipment will install in a rack that is part of the Speaker and Amplifier package and can vary in height. All racks are 20.4" wide and 18" deep. The CD transport is located in the rack and must be within easy reach of the DJ.

Construction in the DJ booth should be completed before the arrival of our technician. This includes the counter top and all electrical.



Professional Dual Tray CD/MP3 Player

Control System

The control system contains all of the sound source devices and controls that are located in the DJ booth. This includes:

- Professional audio mixer
- Dual tray CD/MP3 player
- Digital signal processor
- Microphone and boom
- Audio Lite microphone switch
- Power conditioner
- All interface cables

Audio Mixer



Professional and dependable four channel mixer can mix up to 8 music inputs and two microphones. Easy to learn controls with powerful features make it perfect for novice or pro.

Signal Processor



Our digital signal processor puts many of the required tasks into one compact but high quality unit. These tasks include compression, limiting, equalization and crossover. After our technician properly adjusts all functions, he will "lock-out" the face plate so curious DJs cannot make any changes. Each time the system is powered up, the name of your rink will appear on the screen, assuring that the settings are correct.

Equipment only.....	\$2,023.00
Installed and programmed.....	\$2,770.50

Prices do not include travel expense or freight. Prices current at time of printing. Subject to change without notice.

Speaker & Amplifier Packages

For Skating surfaces under 65' wide

This is a very popular system for small to medium sized rinks. The extra-wide 90 degree dispersion of the ZX4 speaker allows us to get very even coverage even close to the walls. The ZX4 is part of the Electro-Voice portable series but also has certified suspension points for safe installation. It must be flown in the vertical position which means it will hang down about 30".

It features a 15" woofer and a 1.25" compression driver mounted to a patented Constant-Directivity horn. Program power handling is 800 watts with a maximum calculated output of 132 db. It has a smooth black finish so it is easy to clean and will keep looking good for years. It features a 5 year limited warranty from Electro-Voice.



**Electro-Voice
ZX4
Speaker**

The PLX2 Series amplifiers from QSC are the second generation of this concert series amplifier. Using a patented PowerLight power supply, they provide large amounts of power very efficiently and from a very light-weight package. As used in our system, they deliver 550-900 watts per channel, both channels driven, full frequency with just 0.05% Total Harmonic Distortion. That is a very respectable rating for any amplifier at any price!

Components of System

This system includes the following items:

- Electro-Voice ZX4 speakers
- QSC PLX 3102 amplifiers*
- 12 gauge, high strand count cable
- Connectors
- Equipment rack for amplifiers and control system
- Certified fly kits for speakers
- All interface Cables

*While these amplifiers are rated at a minimum of 2 ohms, we run all amplifiers at a minimum of 4 ohms to lower operating temperature and increase life span.

Skating Surfaces up to 100' (6 speakers, 2900w)
Equipment only..... \$ 8,635.00
Installed and programmed..... \$11,950.00

Skating Surfaces up to 140' (8 speakers, 3600w)
Equipment only..... \$10,576.00
Installed and programmed..... \$14,996.00

Skating Surfaces up to 170' (10 speakers, 4700w)
Equipment only..... \$13,903.00
Installed and programmed..... \$19,590.50

Prices do not include travel expense or freight.
Prices are current at the time of printing.
Subject to change without notice.



**QSC PLX 3102
Professional Amplifier**

Speaker & Amplifier Packages

For Skating surfaces OVER 65' wide plus any rink desiring extreme volume

This system is, by far, our most popular. It features the EVF permanent install speaker from Electro-Voice that is designed to be suspended. That means no handles and no feet for a more attractive installation. It also has multiple certified suspension points for safe installation. Because the horn can be rotated we can fly this speaker either vertically or horizontally which allows it to be used even in low ceiling applications.

It features a 15" woofer and a 2" compression driver mounted to a Constant-Directivity horn. When suspended horizontally, it hangs down just 19 inches. Program power handling is 1000 watts and maximum calculated output is 134 db. This is a 70 lb powerhouse! It is finished in a smooth black or white finish that is similar to a spray-on truck bed liner so it is easy to keep clean and will keep looking good for years. It features a five year limited warranty from EV.



**Electro-Voice
EVF
Speaker**

The PLX2 Series amplifiers from QSC are the second generation of this concert series amplifier. Using a patented PowerLight power supply, they provide large amounts of power very efficiently and from a very light-weight package. As used in our system, they deliver 725-1100 watts per channel, both channels driven, full frequency with just 0.05% Total Harmonic Distortion. That is a respectable rating for any amplifier at any price!

Components of System

This system includes the following items:

- Electro-Voice EVF speakers
- QSC PLX 3602 amplifiers*
- 12 gauge, high strand count cable
- Connectors
- Equipment rack for amplifiers and control system
- Certified fly kits for speakers
- All interface Cables

*While these amplifiers are rated at a minimum of 2 ohms, we run all amplifiers at a minimum of 4 ohms to lower operating temperature and increase life span.

Skating Surfaces up to 140' (8 speakers, 4400w)
Equipment only..... \$18,640.00
Installed and programmed..... \$22,800.00

Skating Surfaces up to 170' (10 speakers, 5850w)
Equipment only..... \$24,083.00
Installed and programmed..... \$29,445.50

Skating Surfaces up to 210' (12 speakers, 6600w)
Equipment only..... \$28,581.00
Installed and programmed..... \$35,763.50

Prices do not include travel expense or freight.
Prices are current at the time of printing.
Subject to change without notice.



**QSC PLX 3602
Professional Amplifier**

Subwoofers

Feel the Music!

A subwoofer system is intended to augment the low frequency range of the sound system. This will extend the frequency response and create a more full sound. Not only can subwoofers extend the bass response of your system, but they also reduce the acoustic demands of your full-range speakers.

A subwoofer system will reproduce the extreme bass that skaters of today desire. We offer sub options that may be suspended. If you have the space to set them on the floor they will play slightly louder. We can build a subwoofer system any size you desire. We have illustrated 5 of our most common packages.

ELECTRO-VOICE SUBWOOFERS



EVF single 18", 800 watt suspendible speaker with a calculated maximum output of 131db.



Tour X single 18", 1000 watt floor speaker with a calculated maximum output of 132 db.



EVF twin 15", 2000 watt suspendible speaker with a maximum calculated output of 137db.



Tour X twin 18", 2000 watt floor speaker with a calculated maximum output of 138 db.

QSC AMPLIFIERS



System #1 (1450 watts) Suspendible

- 2 ea. EV EVF single 18" subwoofers
- 1 ea. QSC PLX 3602 amplifier
- 12 gauge, high strand count cable
- Connectors
- Certified fly kits for speakers

Equipment only..... \$ 5,123.00

Installed and programmed..... \$ 6,195.50

System #2 (5000 watts) Suspendible

- 2 ea. EV EVF twin 15" subwoofers
- 1 ea. QSC PL 380 amplifier
- 10 gauge, high strand count cable
- Connectors
- Certified fly kits for speakers

Equipment only..... \$ 7,495.00

Installed and programmed..... \$ 8,665.00

System #3 (1450 watts) Floor

- 2 ea. EV Tour X 18" subwoofers
- 1 ea. QSC PLX 3602 amplifier
- 12 gauge, high strand count cable
- Connectors

Equipment only..... \$ 3,437.00

Installed and programmed..... \$ 4,639.50

System #4 (5000 watts) Floor

- 2 ea. EV Tour X twin 18" subwoofers
- 1 ea. QSC PL 380 amplifier
- 10 gauge, high strand count cable
- Connectors

Equipment only..... \$ 5,723.00

Installed and programmed..... \$ 6,958.00

System #5 (10,000 watts) Floor

- 4 ea. EV Tour X twin 18" subwoofers
- 2 ea. QSC PL 380 amplifier
- 10 gauge, high strand count cable
- Connectors

Equipment only..... \$11,424.00

Installed and programmed..... \$13,894.00

Note: Crossover function is provided by the digital signal processor in the control system. Prices do not include travel expense or freight. Prices are current at the time of printing. Subject to change without notice.

Paging System

Audio Lite high performance music systems are designed to cover the skating floor with music and voice. We purposely aim the speakers in such a manner as to keep the sound concentrated on the main floor and out of the service areas. To increase the clarity of your microphone announcements, add our paging system.

Additional paging speakers add microphone announcements only to various off-skating areas such as the game area and snack bar. Now you can be sure that everyone is hearing your advertisements!

As with our full-range systems, we use only Electro-Voice professional speakers and QSC amplifiers.

Extra microphones can make your operate more smoothly. Common places for these extra microphones are in the ticket office for telephone pages and in the snack bar or birthday party area so the party hostess can announce the birthdays. Since the people using these extra microphones do not have the ability to turn down the music when they talk, our system does it automatically! When the announcement is finished the music is smoothly restored to its previous level.

To mix and process the new microphones we use Rane commercial processing components. Rane products are known for their high quality sound and rock-solid reliability.



Each paging system is unique just as every rink design is unique. For illustration only, we have shown here the components and pricing for a system with the following features:

- 2 extra microphones (Max 4)
- Rane microphone mixer
- 2 Audio Lite microphone switches
- 2 Goosenecks
- Rane automatic ducker
- Two paging speakers (2 areas)
- QSC amplifier
- All cables, connectors and splitters.

Equipment only..... \$ 3,933.00
 Installed and programmed..... \$ 5,493.00

We also have a smaller system that does not include automatic ducking. It consists of:

- 1 Electro-Voice speaker
- QSC amplifier
- Audio Lite mic switch
- All cables, connectors and splitters.

Equipment only..... \$ 1,519.00
 Installed and programmed..... \$ 2,201.50

Prices do not include travel expense or freight. Prices are current at the time of printing. Subject to change without notice.



Wireless Microphone

Adding a wireless microphone allows your DJ to get really involved with the games. With this microphone, your DJ can go anywhere in the rink to interact with the skaters. It also works great if a minister wants to have a devotional during a church party.

Our AKG microphone system features:

- All metal case diversity receiver
- Automatic frequency setup
- Pilot Tone prevents unexpected start-up noise
- Infrared link of all frequency and setup data to the transmitter
- Up to 14 hours battery life and battery status information in hours

The microphone head is the same as the rest of the microphones in your sound system, assuring that all your microphones will have the same "sound".

**AKG
WMS470 D5**



Wireless Microphone & Cable

Equipment only.....	\$ 518.00
Installed and programmed.....	\$ 550.50

Special Needs

*Need your sound system to do something we haven't covered?
Just let us know. Solving unsolvable problems is one of the things that makes our work fun!*

Remote Master Control

Because most skating centers typically use entry level staff, many owners elect to have master control of the sound system in the manager's area. The DJ booth essentially becomes a satellite feed to main system. All of the sound that is coming from the DJ booth is now controlled by just one slider on the manager's mixer.

With this option we include a microphone, mixer and CD player in the manager's area. Now you can actually run a small party from the office!



Equipment only.....	\$ 1,454.00
Installed and programmed.....	\$ 2,072.00

Proud to represent the following quality manufacturers



Intelligent Lighting

“beams in the air!”



Martin Light Jockey

All Intelligent Lighting Packages are supplied with Martin Light Jockey II software and interface dongle, the most comprehensive intelligent lighting software available today. It will not only control the lighting in this package but also all of your DMX based lighting. If you already have Martin Light Jockey or another DMX controller product that is compatible with the fixtures in these packages we will deduct the cost of Light Jockey from your lighting package. A windows based computer is required to support this software.



ADJ Inno Scan HP **ECO** LED

The LED revolution continues with American DJ's Inno Scan HP. Powered by an 80-watt, 50,000 hour LED source, the Inno Scan HP features 6 rotating, replaceable gobos plus spot, 8 colors + white.

This intelligent scanner features two operational modes (DMX-512 and sound active), a Pan/Tilt Inversion Mode, and draws 108-watts of power. It has a 4-button DMX menu and 1.8 degree stepper motors. This package includes adequate DMX cables for most skating centers.

4 fixtures...\$3,588.00 6 fixtures...\$4,654.00 8 fixtures...\$5,720.00



Chauvet Rogue R1 Spot **ECO** LED

Fitted with a super bright 140w LED rated at 50,000 hours, the Rogue R1 Spot will be the power house of your show. It features 8 colors + white plus motorized focus & iris! Two gobo wheels ensure a wide variety of patterns. Gobo wheel #1 features seven rotating, interchangeable, slot-n-lock gobos and wheel #2 has 8 metal gobos plus open. This package comes with adequate DMX cables for most skating centers plus a DMX terminator.

4 fixtures...\$5,958.00 6 fixtures...\$8,424.00 8 fixtures...\$10,890.00



Chauvet Rogue R1 Beam **ECO** LED

The Rogue R1 Beam stands apart and above other narrow-beam fixtures by offering two layerable, independently controlled prisms for stunning split beam effects. The 5-facet and 8-facet prisms can be combined with the 17-slot gobo wheel and 14 colors on the color wheel for a variety of never before seen aerial and gobo effects. It also features a bright, punchy beam with 78,700 lux using Osram's Sirius 132 W HRI lamp. All packages comes with adequate DMX cables for most skating centers.

4 fixtures...\$7,158.00 6 fixtures...\$10,224.00 8 fixtures...\$13,290.00

Audio Lite Signature

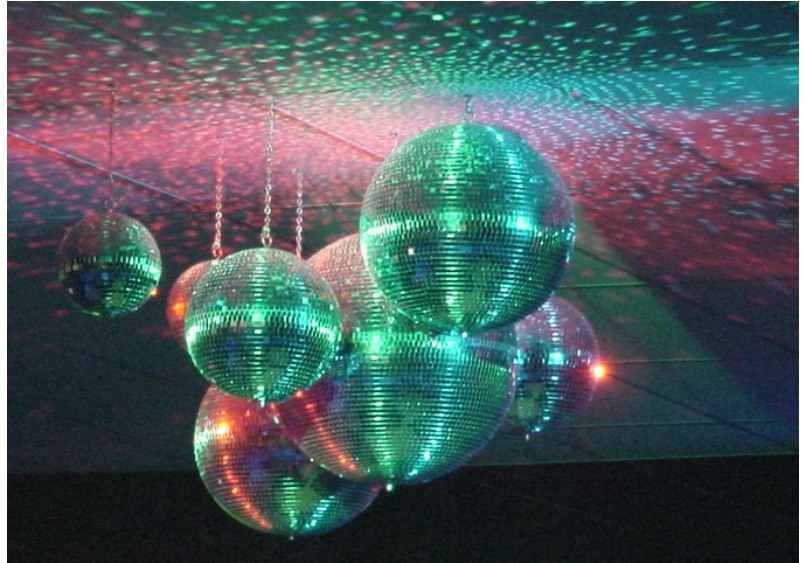


Mirror Ball Clusters

The classic look of the mirror ball just got better! Today we use a tight cluster in varying sizes and heights and light them with high-intensity beams from modern, color changing LED spotlights. Now you have the look of a giant chandelier plus thousands of tiny points of moving light all around the area. Most skating centers use two clusters creating an even more spectacular effect!



The secret to our exclusive installation kit is the computer designed and manufactured hub. The hub places each of the pre-cut struts at exactly the right location. The hub and struts are made of heavy gauge steel and assembled with steel bolts and locking nuts to ensure safety. They are painted non-glare black to be unobtrusive in open ceiling applications. When finished, the assembly is perfectly balanced and can be suspended from just two cables!



Mirrored Ball Cluster

Signature

- 1) 20" Mirror Ball
- 2) 16" Mirror Balls
- 2) 12" Mirror Balls
- 2) 8" Mirror Balls
- 7) HD motors
- 4) 75w LED spot lights
- 1) Suspension hub kit

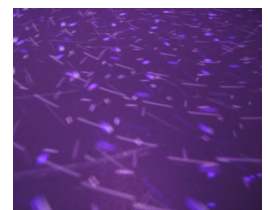
Giant

- 1) 40" Mirror Ball
- 2) 20" Mirror Balls
- 2) 16" Mirror Balls
- 2) 12" Mirror Balls
- 1) HD motor
- 6) M-101 HD motors
- 4) 75w LED spot lights
- 1) Suspension hub kit

Equipment only...
\$ 2,995.00

Equipment only...
\$4,000.00

Additional 75 watt LED spot lights \$499.99 ea.



Audio Lite Signature Fog Distribution System



Properly designed and used, a fog system can add a small amount of particulate matter to the air which enables you to actually see the beams of light in the air. The fog is colorless and odorless. In this photo, the beams of colored light are clearly visible because of the small amount of fog in the air. Without it, all you would see would be the colored patterns on the floor.

Properly used fog will have no effect on your skating floor or air conditioning.

The Audio Lite fog system includes a professional quality fog machine plus a custom designed blower box. The fog machine produces the fog which is then blown into the blower box. The blower box forces the fog into the 4" tubing which is then piped over your skating floor and blown downward through several "T" fittings. This allows the fog to be distributed evenly over your skating floor so there are no big "blobs" of fog in one area that limit visibility. Typically, the fogger and blower box are installed on a shelf in a service room, making it easy to add fog fluid when needed. (4" tubing and fittings are purchased locally at additional cost)



**Antari M-8
Fog Machine**



Fog System

- High quality Antari fog machine
- Audio Lite aluminum blower box
- 100' remote extension
- 4 gallons Premium Audio Lite fog fluid
This fluid is custom blended for us to ensure quality and freshness.

Equipment only..... \$ 1,745.00

You will need to purchase 4" drainage tubing & fittings at a local garden center.



Prices do not include freight.
Prices are current at the time of printing.
Subject to change without notice.

Lights on Broadway

“A spectacular show!” is the only way to describe this lighting package of carefully picked fixtures and effects. Imagine a 13’ circular truss illuminated with 8 high output, smooth color mixing LED par lights. Combined with 8 Chauvet Rogue R1 Beam moving heads, a Robe Dominator and 4 full color RGB animated 3D laser effects, your customers will feel like they are at the “big show”. To highlight all these moving beams we have included the exclusive Audio Lite fog distribution system! Also included are 2 giant mirror ball clusters, each illuminated by 4 high powered 75 watt LED spot lights. The lights will be controlled with Martin Light Jockey software. Package includes all necessary data cables including a Blizzard Pipeline 8-way DMX Distributor.



Audio Lite fog distribution system

Total package \$35,058.00



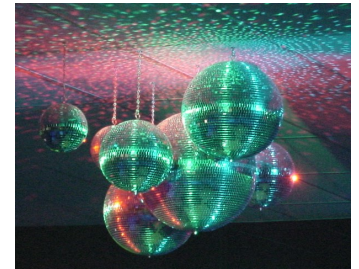
Dominator



Kaptivator



Rogue R1 Beam



GIANT Mirror Ball Cluster

42nd Street Package ECO LED

This high end lighting package includes 8 Chauvet Rogue R1 Spot moving heads plus 10 American DJ Revo 4 IR, 4 American DJ Quad Phase HP and 4 Chauvet Intimidator Wave 360 to create a variety of pattern effects on the walls, floor and even in the air. To highlight all these beams we have included the exclusive Audio Lite fog distribution system. We have also included Martin Light Jockey software for total control of the intelligent lighting. Package includes all necessary data cables and a Blizzard Pipeline 8-way DMX Distributor.



Audio Lite fog distribution system

Total package \$20,021.00



Revo 4 IR



Quad Phase HP



Rogue R1 Spot



Intimidator Wave 360

*Light Jockey is a computer program which requires a computer to use. Computer is not included. Freight and installation extra on all packages. Prices subject to change without notice.

Times Square ECOLED

This impressive special effect light show features 4 Chauvet Intimidator Scan 305 IRC, intelligent scanners to give you the “Beams in the Air” effect and 6 Chauvet Cubix 2.0 fixtures to create plenty of pattern effects on the walls, floor and even in the air. To highlight all these beams we have included the exclusive Audio Lite fog distribution system! Over your floor will be 2 mirror globe clusters, each illuminated by 4 high powered 75 watt LED spot lights. The intelligent lighting will be controlled with Martin Light Jockey software. **Total package \$12,459.00**



Audio Lite fog distribution system



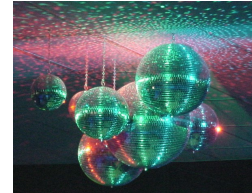
Intimidator Scan 305 IRC



Cubix 2.0



75w LED spot light



Mirror Ball Cluster

Package includes all necessary data cables including a Blizzard Pipeline 8-way DMX Distributor.

Studio 54 ECOLED

A lot of excitement at a bargain price! Four Blizzard Kaptivator high power lasers, 8 Blizzard Snowball and 8 Revo 4 IR give you great “Beams in the Air” plus lots of great patterns on the floors and walls. Beams are highlighted by the exclusive Audio Lite fog distribution package. Our signature mirrored ball cluster is highlighted by 4 high intensity 75 watt LED spot lights is included. The intelligent lighting is controlled by Martin Light Jockey software. **Total package \$11,182.00**



Audio Lite fog distribution system



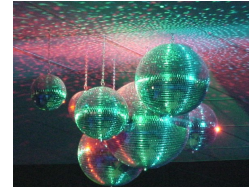
Revo 4 IR



Snowball



Kaptivator

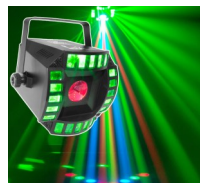


Mirror Ball Cluster

Package includes all necessary data cables including a Blizzard Pipeline 8-way DMX Distributor.

Cabaret ECOLED

Our smallest package still includes plenty of punch to keep the kids excited. Six Blizzard Snowballs provide room filling coverage. Four Blizzard Kaptivators will “captivate” your audience with their red/blue/green laser effects. The 4 Cubix 2.0 yield fascinating pattern effects on the floor and walls. Beams are highlighted with an Antari F-1 Fazer. The intelligent lighting is controlled by Martin Light Jockey software. **Total package \$5,717.00**



Cubix 2.0



Snowball



Kaptivator



Highlight the light show beams!

Package includes all necessary data cables including a Blizzard Pipeline 8-way DMX Distributor.

Video Entertainment

Take your session fun to a new level with video entertainment from Audio Lite

Today's youth market is exposed to video constantly. Music television, retail stores, concerts and now, even their cell phones show video. Your new skating center can take this media and expand it to a new level. Imagine, one or two video images that extend from floor to ceiling! Add to this several ceiling mounted monitors in the snack bar and game area. Now you're starting to get the picture!

You can show music videos, extreme sports and skating events plus in-house advertising for upcoming events and retail sales. The monitors in the snack bar can show on-air programming that will interest parents. We can even add a live camera that is controlled in the DJ booth by a joystick that will give you live shots of the skaters even in extremely low-light conditions. Now that's entertainment!

System Enhancements

A video mixer allows you to mix four different sources such as DVD players, camera and on-air television. You then have the ability to blend flawlessly from one source to another, run picture-in-picture, and even pick from a variety of special effects.



A high quality, remote controlled video camera is a great addition to your video system. Now you can make your skaters the star of the show. Every kid wants to see his face on the giant screen. Imagine the limbo game or the birthday parties on video.



Much more to choose from!



Today's video projectors offer extreme brightness, light weight and low cost. We constantly research the market to find great deals on quality projectors to save you money.

LAMPS 4 LIFE!

Never pay for another replacement lamp with the Lamps for Life program!

Remember, without video, it's just radio!





Boston X30N Projector

- Bright images at 3000 lumens
- Side-changing lamp and filter. No need to remove from the ceiling
- Sharp 1024x 768 (XGA) resolution
- 3-year limited warranty
- Optional "Lamps for Life" program. \$299.00 additional

\$899.00



D967-WT Projector

- Bright images at 5500 lumens
- 1024 x 768 (XGA) resolution
- 5 year warranty



PRICE TOO LOW TO SHOW



D963-HD Projector

- Bright images at 4500 lumens
- 1080p resolution
- 5 year warranty



PRICE TOO LOW TO SHOW

HITACHI

CP-X8170 Projector

- Bright images at 7000 lumens
- XGA
- 3 year warranty



\$3,490.00

Basic Installation Kit

This kit will provide nearly everything you need to suspend your new projector from an I-beam or purling. It also includes a high quality power conditioner to extend lamp life and protect your investment. Items included are:

- Projector mount (attaches to your new projector)
- Ceiling attachment kit
- High quality power conditioner
- Installation instructions



Total cost for the above items is \$409 plus freight. All items can be used with any projector you purchase in the future. You will need to purchase locally a piece of 1.5" pipe long enough to reach from your beam or purling attachment point down to 6" below the top of the projected image.

Cabling Options

If you will be playing music videos on a DVD player similar to the one shown below this is the cable that you need. We custom make it to your required length using Belden Brilliance cable and Canare precision connectors to provide the finest composite cable available. The cost is \$10 plus \$0.75/ft. For example a 100' cable would be \$85.00. DVD player for illustration only



If you want to use your computer to originate the video signal you can take advantage of programs like PowerPoint to create advertisements on your big screen. For distances up to 100' we have high quality, shielded VGA cables. The cost for a 100' cable is \$100.00. For distances over 100' you will need to use a HDMI/VGA signal extender. The cost is \$339.00 plus \$0.35/ft.



To send a signal from both DVD and PC sources you will need to use an IR Extender Kit so that you can use your projector's wireless remote in the DJ booth to change the inputs on your projector. The cost of the IR kit is \$199.00 including up to 150' of cable.

Remote Controlled Video Camera System

A NEW WAY TO ENTERTAIN!

Add an entirely new attraction to your fun line-up by adding a remote controlled video camera. Now you can put the skaters on the big screen. Whether it's games, birthday parties or just the skaters, the kids like to see themselves on the big screen. The parents like to see them too!

Your DJ will have a controller so he or she can point the camera any direction and a zoom control so they can get really tight shots. The focus and brightness level is all automatic. The camera is extremely sensitive and in very low light conditions the image you see on the screen will be brighter than the actual scene.

JOYSTICK CONTROLLER

In addition to complete pan, tilt and zoom functions, there are also 99 available presets that you can use to preprogram the location of your favorite shots like the limbo game, birthday tables, snack bar and arcade.



QUALITY COMES FIRST

The only way the kids will enjoy watching the video is if it is high quality. The Bosch Autodome cameras have established the quality standard for this type of camera. They are used in high profile security installations around the world including the Hartsfield-Jackson Atlanta International Airport. As you walk down any concourse you will see them on the ceiling.

CAMERA PACKAGE

- High quality pendant style video camera with zoom function and power supply.
- Joystick controller with power supply. (Can control up to 16 cameras)
- Up to 100' of video cable. Additional at \$0.75/ft.
- Power supply cables
- Attachment kit for I-beam or purlin
- Complete installation instructions (You will need to purchase locally a length of 1.5" pipe to reach from the roof attachment point down to the camera location)

Equipment only.....

Camera package 28x zoom	\$3,681.00
Camera package 36x zoom	\$4,155.00

Prices do not include travel expense or freight. Prices current at time of printing. Subject to change without notice.

Video Mixer

The V-4EX is a very useful tool when mixing between composite sources such as DVD players and cameras. It allows a smooth transition with many available wipes, fades & dissolves.

ALL-IN-ONE SD VIDEO MIXER WITH HDMI IN/OUT, USB STREAMING OUT, AND BUILT-IN MULTI-VIEWER WITH TOUCH CONTROL

The V-4EX has 4 inputs in a compact body allowing you to switch and mix any two inputs. A and B channels have independent TBC's (Time Base Corrector) which gives you stable mixing from any source. Low cost and high performance are some of the V-4's most important qualities.

HIGH QUALITY IMAGES FROM ALL DIGITAL PROCESSING

The V-4EX produces high-quality images of more than 500-line resolution by virtue of its internal 4:2:2 full digital processing. Mix images of DVD quality without any degradation.

HIGH QUALITY VIDEO EFFECTS AND MULTIPLE WIPE PATTERNS

Access 259 transitions & 148 types of effects such as Still, Strobe, Multi Screen, Picture in Picture, all at the touch of a button.

TOUCH SCREEN

The V-4EX has a built-in touch multi-viewer.

V-4EX

4-Channel Digital Video Mixer with Effects

YOUR COST \$1,995.00





Note: Most skating centers use a white painted surface instead of a screen. If a screen is used, it will give a superior image but should not be installed in a location accessible to skaters.

Consistent quality, quick delivery and cutting edge innovation are just a few of the reasons that Audio Lite prefers Da-Lite screens for nearly every installation. In addition, there are thousands of model/screen material/size combinations that allow us to specify the perfect screen for your project. Here are a few of our favorites.



Cosmopolitan® Electrol®

- Ideal for applications where a recessed installation is not desired or feasible.
- Patented in-the-roller motor mounting system for quiet operation. Handsome white painted case blends with any décor.
- An optional choice of seven veneer finishes are also available for the screen case for a warm, elegant look.

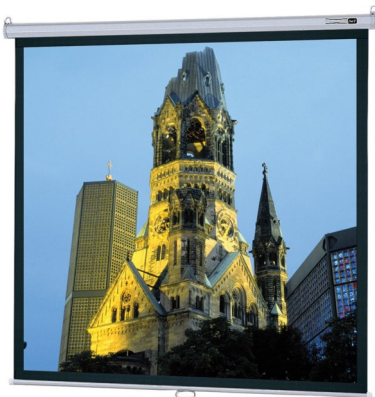
8'9" x 11'8" screen from \$1,197



Perm-Wall

- Designed for permanent mounting to the wall or in a wall opening.
- Front or rear projection surfaces snap easily on to the front of the black powder coated aluminum frame.
- Provides a perfectly flat viewing surface for graphic and data video projection.

10' x 13'4" screen from \$1,247



Manual Model B®

- Perfect for classroom and meeting room facilities.
- Easy pull-down system locks at intervals to fit a variety of projection formats.
- Nylon bearings provide a smooth quiet operation for the life of the screen.
- Case design allows for hanging from a ceiling or flush mounting to a wall.
- Available up to 5'9" x 7'8".

5'9" x 7'8" screen from \$166



Manual Model C

- Ideal for large size conference or training rooms.
- Permanently lubricated steel ball bearings combined with nylon bushings and heavy-duty spring assembly offers smooth operation.
- An optional choice of 7 veneer finishes are also available for the screen case for a warm elegant look.
- Available up to 10' x 13'4".

10' x 13'4" screen from \$1,078

BOXLIGHT GUARANTEE

BOXLIGHT Certified is our promise that the products we sell represent the world's very best value in presentation technology. No other company goes to this extent to guarantee your complete satisfaction.

Technology: Our products represent every leading display and projection technology available today.

Selection: Our selection features products that excel in every presentation category. We can offer you the right choice to fit your exact needs.

Testing: Each and every product is thoroughly tested before it can become BOXLIGHT Certified. That means reliability and performance will never be an issue.

Experience: We have the longest history in the electronic presentation industry. Period.

Training: BOXLIGHT sales staff and technicians undergo a rigorous training regimen -- complete with hands-on training for every BOXLIGHT product and ISF certification in video calibration. This training enables us to calibrate and ensure the highest possible image reproduction of our products. This is done by correcting the brightness, contrast, and colors to bring the highest level of image performance possible.

Tech Support: Every product comes with **free 24/7/365** technical support which is provided by a real person in real-time. No long hold times, phone queues, or difficulty in communicating. Our entire support staff is located in our corporate offices in Belfair, Washington.

Service: Our Service and support department technicians are all extensively trained and ISF certified.

Warranty: BOXLIGHT has the best guarantee in the business. We warranty our lamps for 90 days and all BOXLIGHT projectors are covered by a three year warranty.



LAMPS FOR LIFE!



Never worry about replacement projector lamps again.

Yes, that's right—NEVER AGAIN!
One low price now equals a lifetime of lamps.

The **Lamps for Life** program was developed to guarantee you pay the lowest possible price for BOXLIGHT replacement lamps.

A one time fee registers your projector into the **Lamps for Life** program. Simply return the expired lamp to BOXLIGHT for a replacement. The **Lamps for Life** program is a one time fee of



Lamps for Life applies to all BOXLIGHT Projectors

Excluding Pro Series. Limited availability on DLP™.

What you could spend over the course of 5 years
for replacement projector lamps

	replacement bulb cost	Lamps for Life
replacement lamp #1	\$334	\$299
replacement lamp #2	\$334	0
replacement lamp #3	\$334	0
	\$1,002	\$299

Figures based on 5 year projector lifespan and replacing lamp 3 times.
Average lamp costs based on current retail from various manufacturers.

Failed lamp must be sent to BOXLIGHT prior to replacement.

Customer responsible for all shipping charges.

3rd lamp exchange requires projector service & cleaning.

Replacement lamp must be used for original enrolled projector only, using replacement lamp in any other projector will void **Lamps for Life** program.

Excessive lamp use (over 12 hours/day) or using lamp in harsh environments without appropriate filtration and maintenance will void **Lamps for Life** warranty. **Harsh environment and smoke filters available for purchase. See warranty statement for additional info.*

Upon purchase into **Lamps for Life** program, BOXLIGHT projector & lamp serial numbers will be automatically enrolled.

Warranty details included with shipment.

BOXLIGHT[®]
Presenting a Better Way

360.464.2119
www.boxlight.com

LAMPS FOR LIFE!

FAQ's

Q: What do I do when my lamp fails?

A: Contact Boxlight Tech Support at 360-464-2119 option 2. You will need the model and serial number of your projector and a description of the lamp failure. Once Boxlight receives the request, they will issue a RMA for the return of the defective lamp. Once the lamp is received, Boxlight will evaluate it and replace it. If the lamp proves not to be defective, the lamp will be returned to you or ask to have the projector sent in for service.

Q: How long should my lamp last?

A: The average life span depends on many variables, but should be in excess of 2500 hours of use.

Q: How do I know if my lamp is bad?

A: Is the lamp outputting any light? If not, this is either a problem with the lamp or the projector. The next step would be to remove the lamp and inspect it. Is it broken or shattered? Looking into the lamp, is it blackened or misty looking? These are things that may indicate a bad lamp. However, many bad lamps look fine and show no outward problems. Please call Boxlight tech support at 360-464-2119 option 2 for more information and assistance.

Q: How long does it take to get my replacement lamp?

A: You will be responsible for both shipping to Boxlight and shipping back to you. We can usually verify the defective lamp the same day we receive. The minimum time would be 2 days if next day service is used.

Q: Can I get an advanced replacement for my defective lamp?

A: Boxlight does not offer advanced replacements for the Lamps 4 Life program. This is due to the evaluation of the defective lamp and the return of a serialized replacement lamp to the customer. This way they can track any problems that may be arising with the projector.

Q: I use my projector for 14 hours a day; can I get into the Lamps 4 Life program?

A: The Lamps 4 Life program limits daily use to 12 hours. Going over this will void the Lamps 4 Life program for that projector.

Q: What can I do to prolong the life of my lamp?

A: The number one thing is to keep the air filter clean. This will enable the most effective cooling of the projector and the lamp. Turning off the projector when not in use will also help to lengthen the life of the lamp. Selecting the ECO mode for the lamp will also allow the lamp to live longer.

Q: What models are covered by the Lamps 4 life program?

A: Currently, the entire Boston series of projectors are eligible, as are the ProjectoWrite 2 series of projectors. Also eligible are the MP65e, MP-Wx70e and the DX25nu.



A few notes on installation

Our installation professionals are well trained and fully insured. Our goal is to complete your installation as quickly and accurately as possible with as little interruption to your schedule as possible. Here are a few items that you should be aware of:

1. All of our “Installed” prices are based on several assumptions about your building and operation. Any deviations from these assumptions may cause increased cost of material and/or labor. If any of these apply to you, please contact us immediately.
 - A. Roof supports no more than 4’ above any false ceiling.
 - B. Bar joist or I-Beam construction
 - C. Access for scissor lift.
 - D. Access to rink for 10 hours per day on consecutive days.
 - E. AC power is completed.
 - F. No other trades are working in the DJ booth.
 - G. DJ booth is substantially complete.
 - H. Uninterrupted access to skating floor and any other areas where speakers will hang or wires will run.
 2. Our workers are non-union. If this will pose a problem please let us know immediately. We also do not apply for any special permits or licenses to work in your community unless you or your general contractor make us aware of the need. The cost of licenses, special work permits, local or state taxes, etc. will be passed on to the project owner. We are not equipped to do any jobs normally done by an electrician or a carpenter.
 3. We will do everything in our power to ensure that your project proceeds on schedule. We cannot be held responsible for delays that are beyond our control including any acts or omissions by our manufacturers, vendors or transportation companies.
 4. The sound system Control Package plus any of the Speaker and Amplifier packages will form a complete sound system. All other packages should be considered options to the above system and may require additional material and labor to perform with any other sound system.
 5. “Travel Expenses” include all expenses that our technician incurs while at your job site or traveling to or from the job site. These expenses
5. include but are not limited to airfare, mileage, rental car and gas, food, lodging, tolls etc. We bill actual cost on every item except for the \$30 per day food allowance.
 6. Most jobs require the rental of a scissor lift. It is the buyers responsibility to provide the lift and have it on site during installation.

Payment. We require a 25% down payment. This will allow you to lock in the price of your new equipment at the beginning of your project. 90 days before projected installation date an additional 50% of the contract amount is due. At that time we will issue purchase orders for all of your equipment and begin any custom assembly in our shop. 30 days before the installation date an additional 20% is due. At this time we will order the release of all drop shipments, ship all items in our possession, purchase airline tickets and make all remaining travel arrangements. We will also need a credit card on file for travel expenses. If you elect to pay by check we will not bill the card but still need it on file. The balance of 5% plus travel expenses is due at the time service is rendered. Please be prepared to present payment to our technician.

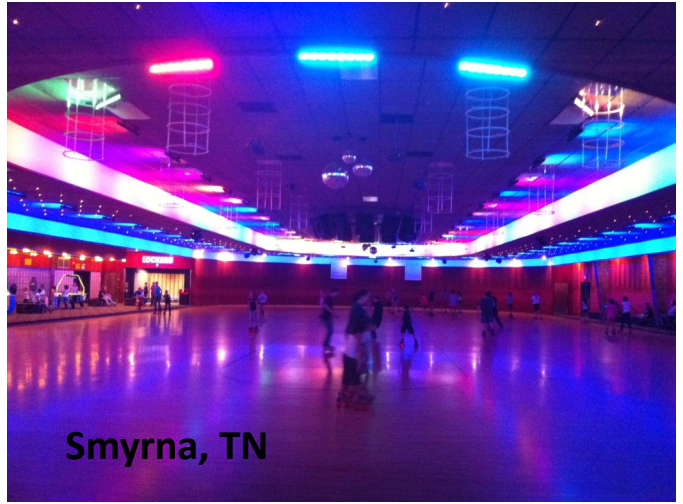
Payment for systems that will be user installed must be prepaid prior to shipment. We accept check, money order, bank transfer & credit cards. There is a 3% surcharge on credit card purchases. Leasing is available to qualified applicants.

Ask your accountant about the benefits of leasing.

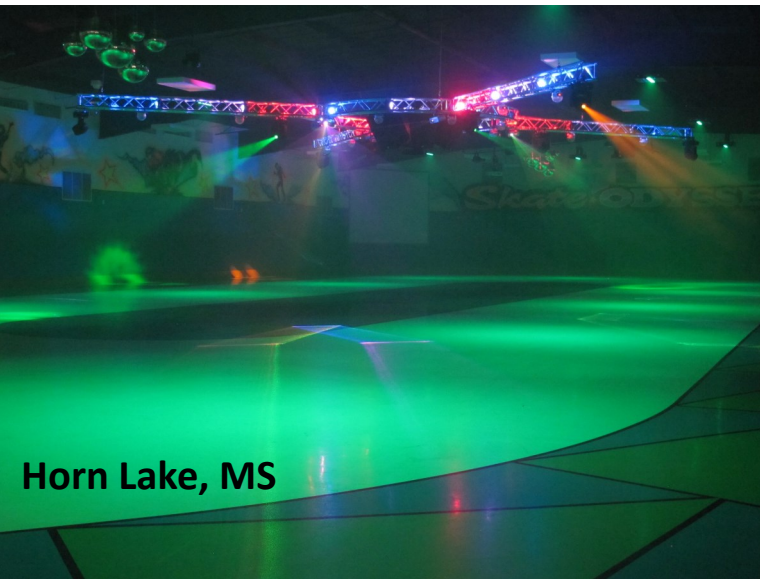




Fruitland, MD



Smyrna, TN



Horn Lake, MS



Ft. Knox, KY



Ventura, CA



All prices are subject to change without notice. Part lists shown in packages may not include all necessary suspension parts. All trademarks are the property of their respective owners. All pages Copyright 2016, Entertainment Specialties, Inc.